

Electricity
Distribution

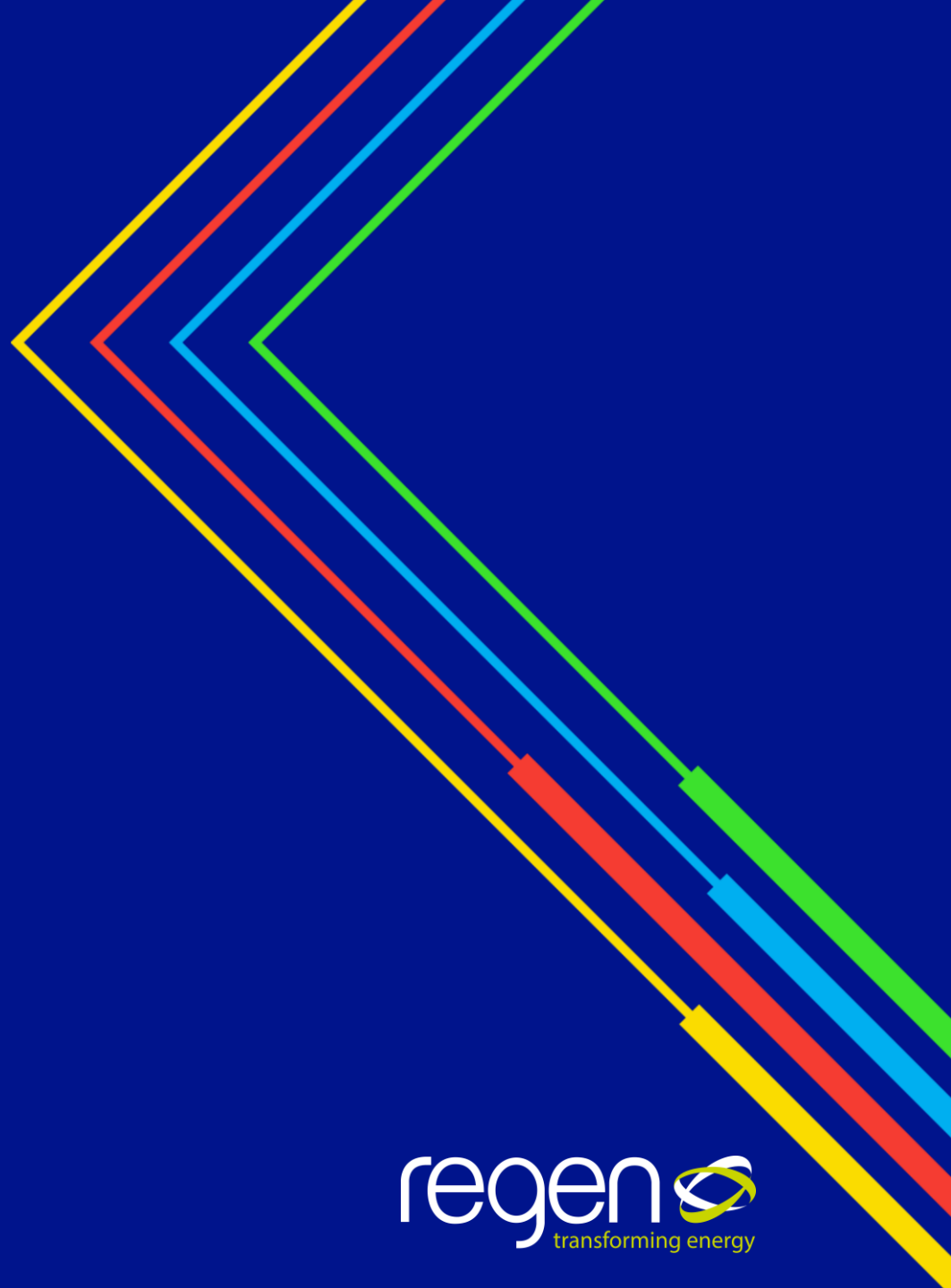
Distributed Generator Owner / Operator Forum

London

Tuesday 9th July 2024

nationalgrid

regen 
transforming energy



Agenda

- 14:00** **Welcome and introductions**
Hannah Stanley, stakeholder manager, Regen
- 14:05** **Update from National Grid Electricity Distribution**
Robert Ballentine, head of control centres, NGED
- 14:15** **Update on NGED outages**
Danielle Greedy, control support engineer, NGED
Tom West, engagement and resilience engineer, NGED
- 14:25** **Update from DSO commercial team**
Helen Sawdon, flexibility commercial manager, NGED
- 14:35** **Constraint mitigation using Active Network Management**
Pete Aston, specialist connections engineer, Roadnight Taylor
- 14:45** **Break**

Agenda

- 15:00** **Enhancing the outage planning process**
Joe Davey and James Mitchell, DSO energy management engineer, NGED
- 15:55** **AOB and feedback**
Hannah Stanley, stakeholder manager, Regen
- 16:00** **Event end and networking**



Electricity
Distribution

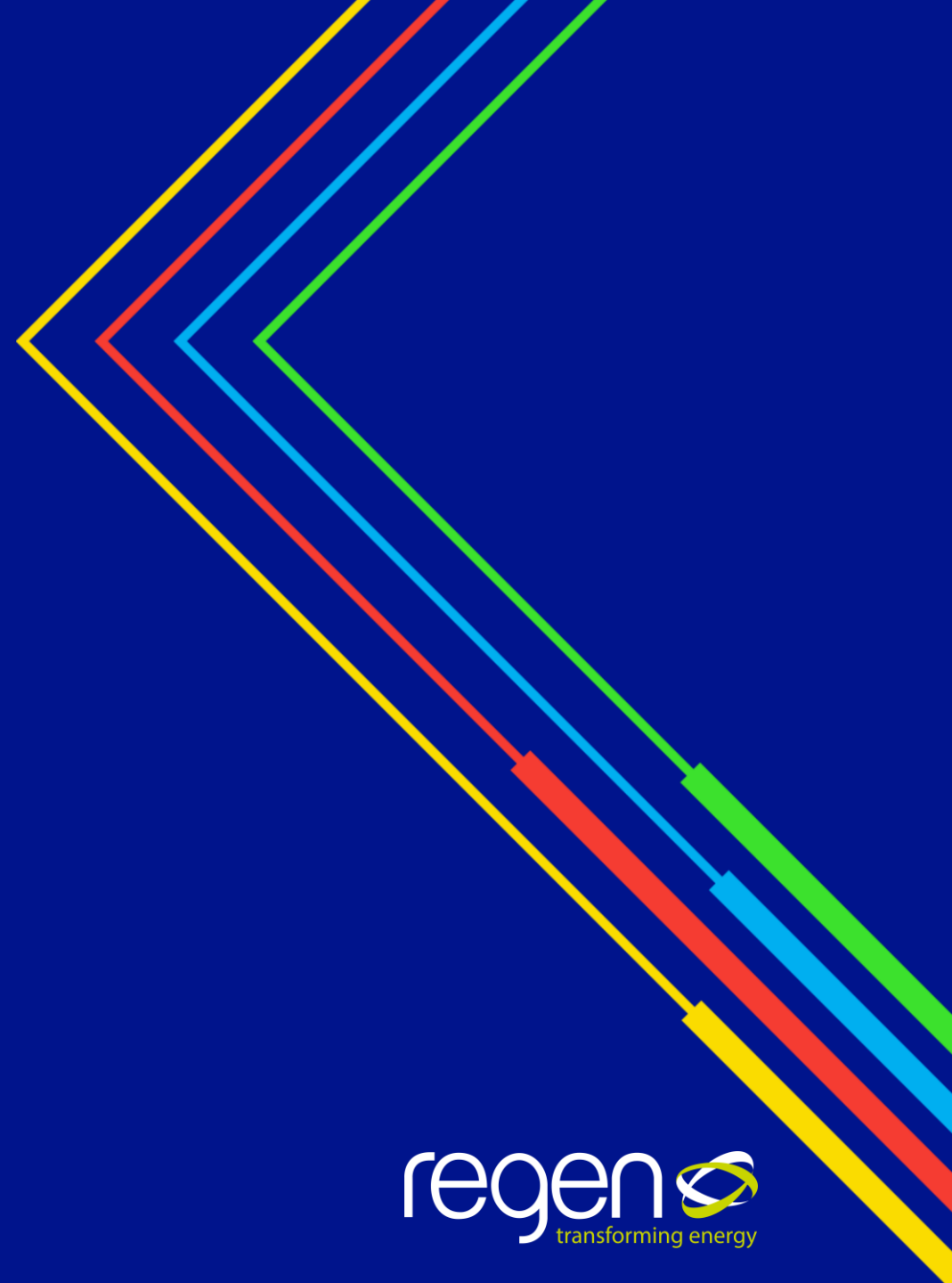
Distributed Generator Owner / Operator Forum

Update from National Grid Electricity Distribution

Robert Ballentine
Head of control centres
National Grid Electricity Distribution

nationalgrid

regen 
transforming energy



**Electricity
Distribution**

Outage Planning Update

**Danielle Greedy
Control Support Engineer**

nationalgrid



National Grid Electricity Distribution Outages 2024/25

NGET & NGED now in '2024/25 Outage Season'.

Current Number of Upcoming Planned Outages per License Area (Ongoing, Approved, Provisional & Submitted);

- South West – 509
- South Wales – 434
- East Midlands – 726
- West Midlands – 437

Future plan to identify number of above outages that affect DER customers.

The image displays four screenshots of the WPD Control Centre - Outage Planning (Live) interface, arranged in a 2x2 grid. Each screenshot shows a dashboard for a specific license area with various navigation and status buttons.

- East Midlands:** Shows 40 outages awaiting approval. Buttons include Enter New Outage, Edit Outage, View Archive, Outage Scheduler, Comments (4), Administration, Reports, and Inbox.
- West Midlands:** Shows 48 outages awaiting approval. Buttons include Enter New Outage, Edit Outage, View Archive, Outage Scheduler, Comments (165), Administration, Reports, and Inbox.
- South Wales:** Shows 141 outages awaiting approval. Buttons include Enter New Outage, Edit Outage, View Archive, Outage Scheduler, Comments (2), Administration, Reports, and Inbox.
- South West:** Shows 297 outages awaiting approval. Buttons include Enter New Outage, Edit Outage, View Archive, Outage Scheduler, Comments (0), Administration, Reports, and Inbox.

Each interface also includes a 'Number of Outages in Inbox' indicator and an 'Inbox' button. The bottom right of the South West screenshot shows 'OMS App 5.00.11 Lib 2.00.01'.



Electricity
Distribution

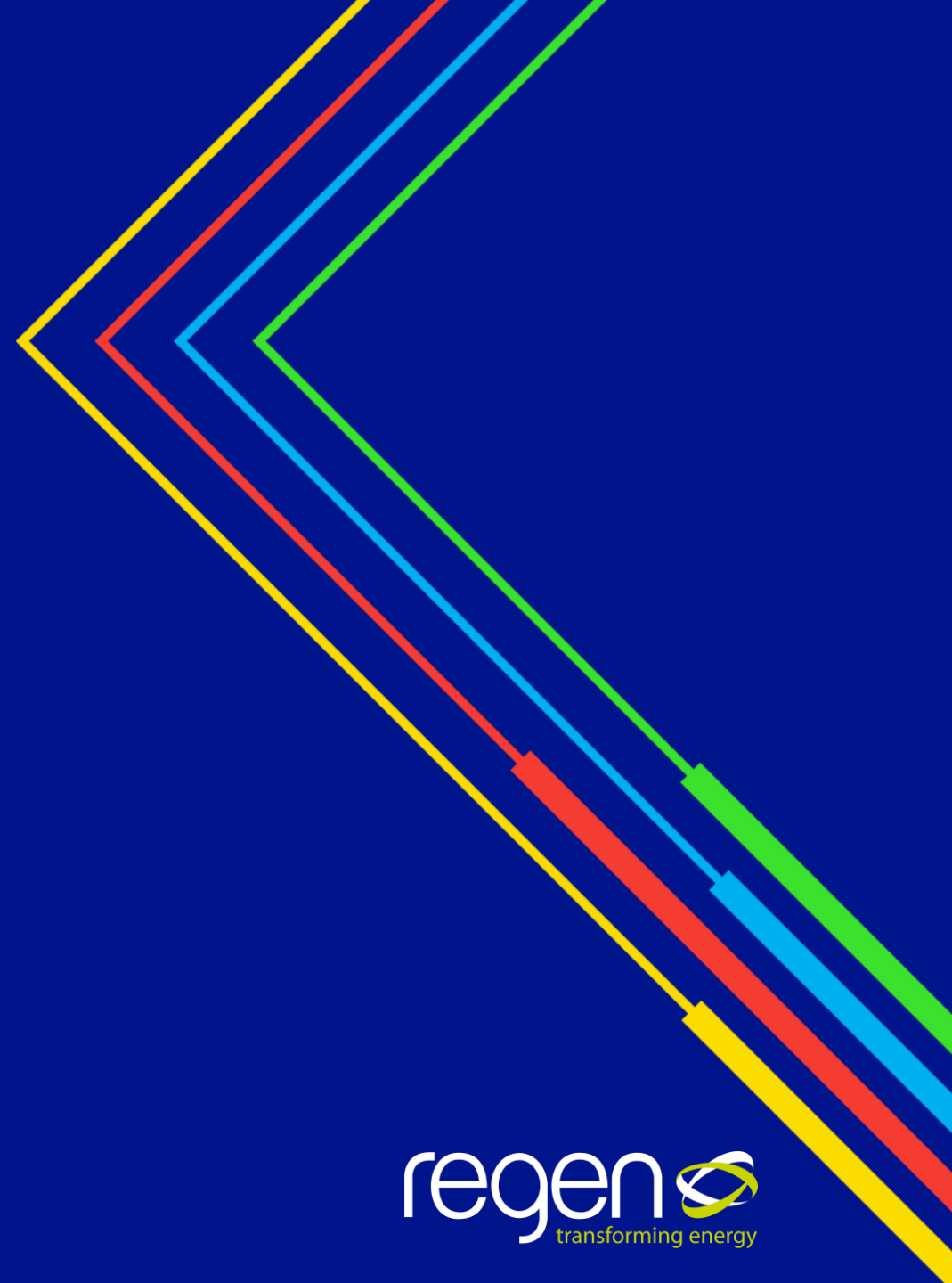
Distributed Generator Owner / Operator Forum

Update from the DSO Commercial Team

Helen Sawdon
Flexibility commercial manager
National Grid Electricity Distribution

nationalgrid

regen 
transforming energy



Market Opportunity

- We procure long term trades yearly, supplemented with weekly trades
- We use an overarching contract with commercial and technical qualification required ahead of trades.
- We only trade with existing assets
- Interact through Piclo Max or direct through our Market Gateway
- Extensive data on our connected data portal

Last round (analysis underway for autumn procurement)

HV zones

£2.7m opportunity

166MW of requirement

56 zones

Requirements out to 2029

LV zones

£2.2m opportunity

92MW of requirement

1426 zones

Requirements for next year

Pricing

Secure

£1045/MWh average

Dynamic

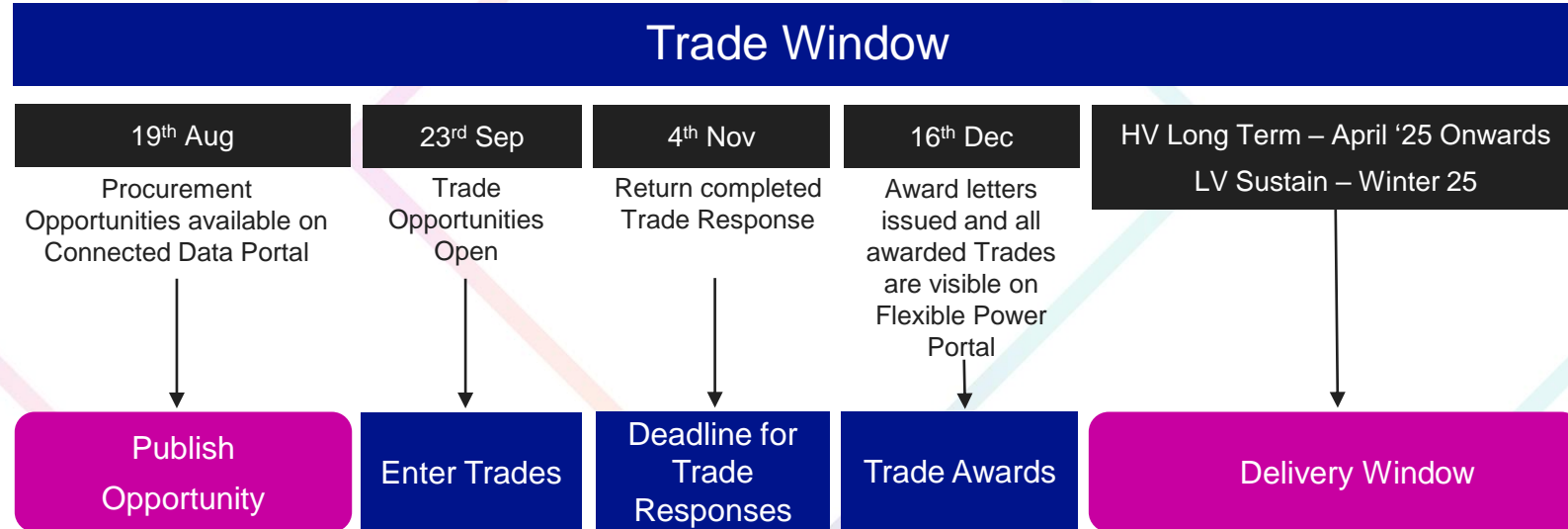
£2936/MWh average

Sustain

£68/kW/delivery period average

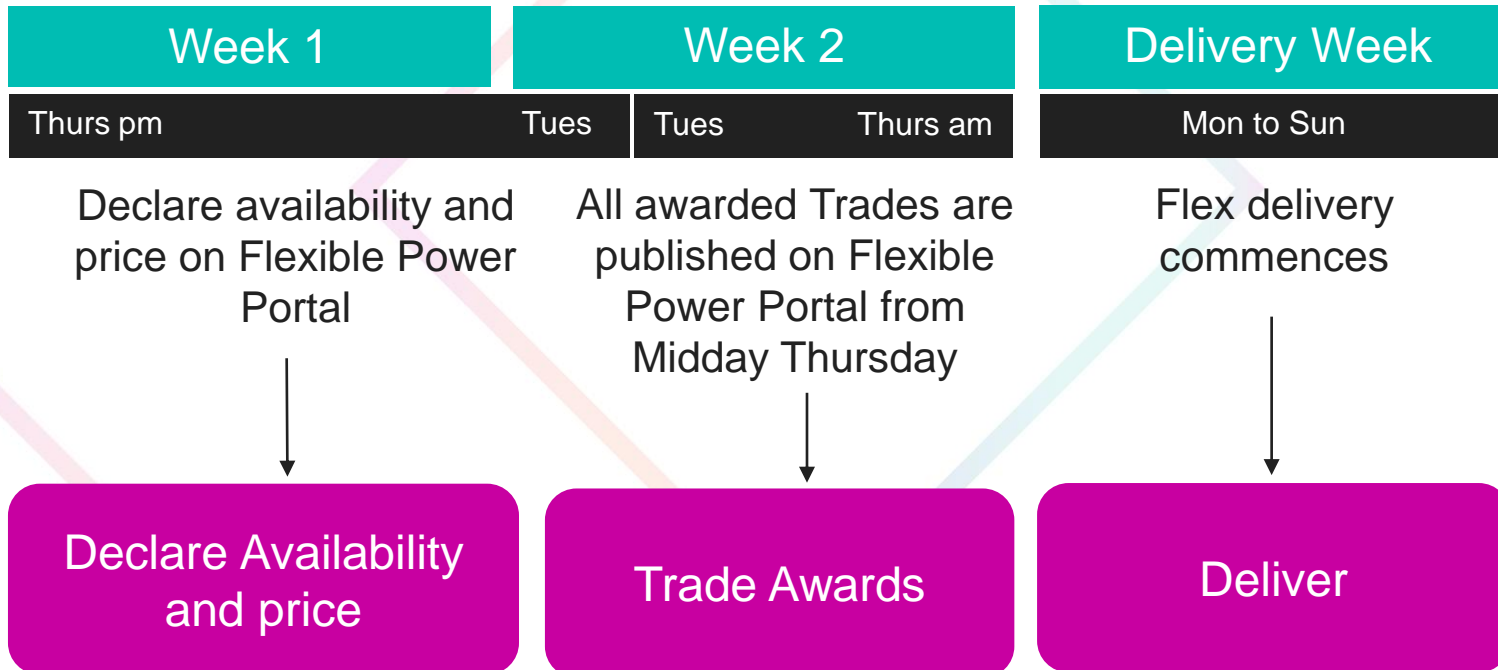
Key Dates

Low Voltage Sustain and High Voltage Long Term Trades Procurement Timeline



Key Dates

Short Term Trades Procurement Timeline



Entry Through Piclo Flex



National Grid and Piclo announce strategic partnership
to enhance local flexibility markets

Flexibility Providers can now chose to enter our LV Sustain Market via Piclo or direct through NGEDs Market Gateway.

Across all our markets we're looking to grow volumes by opening as many routes to market as possible

For more info visit [Piclo Flex](#)

Further help & guidance is available

national**grid**
Market Gateway

- [Market Gateway](#)
- [User Guide](#)
- [FAQ's](#)

 **Flexible Power**
Portal

- [Flexible Power Portal](#)
- [Flexible Power Portal API documentation](#)
- [FAQ's](#)

 **Connected Data Portal**

- [Flexibility – Requirements](#)
- [Trades Data and Results](#)

 **Flexible Power**
Website

- [Guidance document](#)
- [Flex procurement End to End Process Map](#)
- [Procurement and Engagement timetable](#)
- [Tools and Documents](#)



Electricity
Distribution

Distributed Generator Owner / Operator Forum

Constraint mitigation using Active Network Management

Pete Aston
Specialist connections engineer
Roadnight Taylor

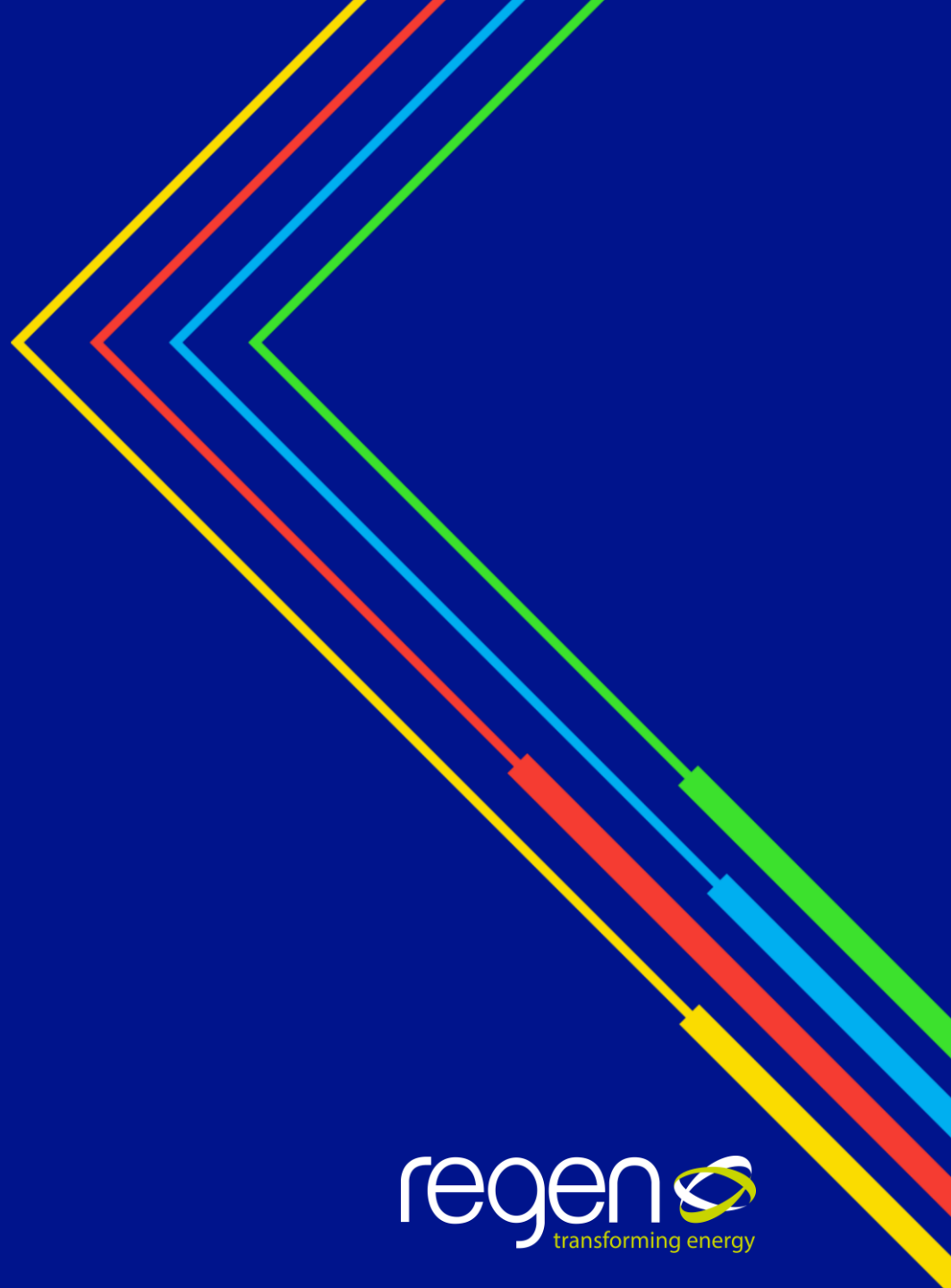
nationalgrid

regen 
transforming energy

Electricity
Distribution

Distributed Generator Owner / Operator Forum

Break



**Electricity
Distribution**

Enhancing Outage Planning Process

**Danielle Greedy
Control Support Engineer**

nationalgrid



Current Outage Planning Process

Week 49 (December)

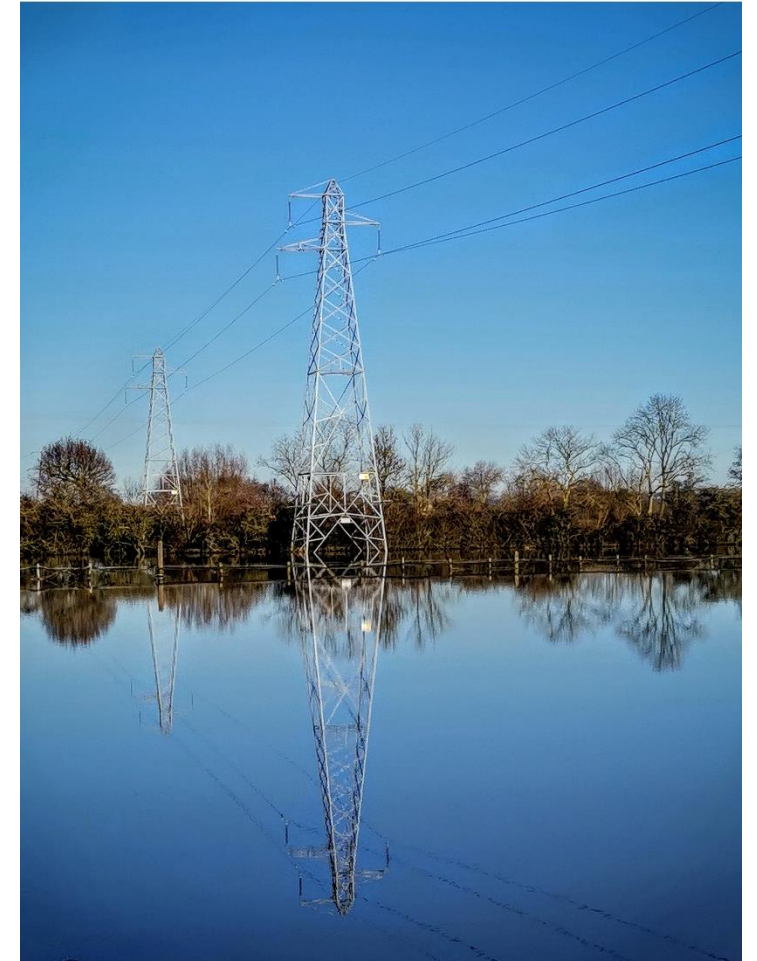
- NGESO / NGET 400/275/132kV Year Ahead Outage Plan received for following year (March – March).

Week 1 – 4 (January / February)

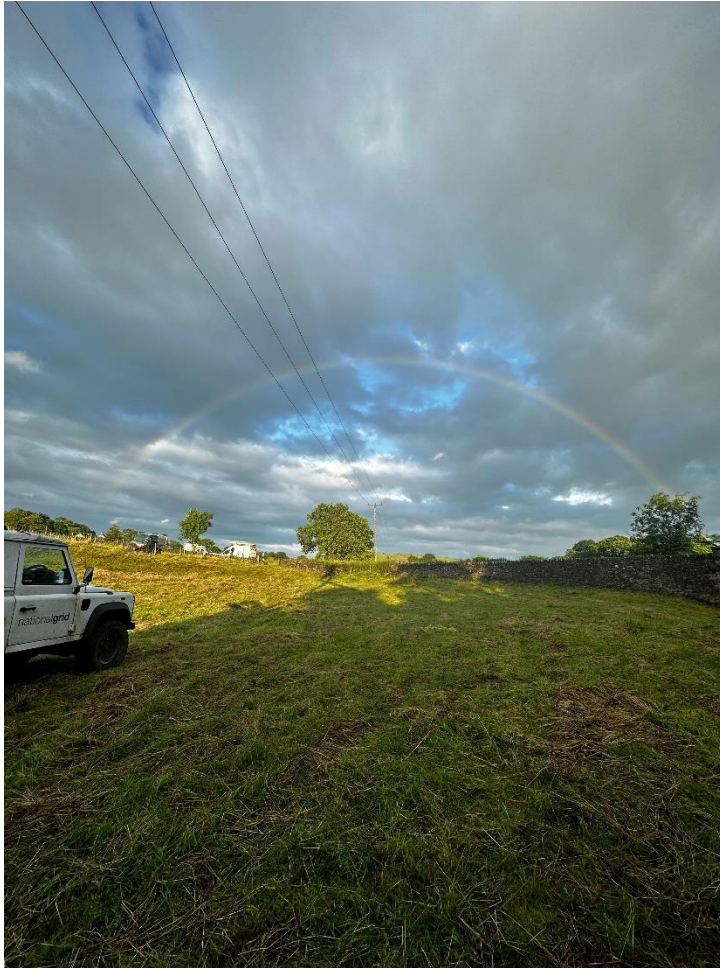
- NGED 132kV Outage Plan formulated & sent to NGESO/ NGET. Any outages requiring curtailment / supply interruption of DER marked as 'Provisional' in NGED's Outage Management System (OMS).
- Curtailment / interruptions visible in the NGED Generation Portal.
- Curtailment requirements based on Connection Agreement.

Week 5 – 8 (February / March)

- Same process as above (without informing NGET / ESO) for 66/33/11kV planned outages.



Current Outage Planning Process



Week 8 Onwards...

- Ad-hoc outage planning;
New outages submitted and assessed by Outage Planners.
- 8 Week Ahead Curtailment Report sent out every Friday.

Bespoke Outage Studies

Undertaken for unusual outage combinations or where outage would require excessive curtailment / interruption for DER customers.

Outage Planning & Other Departments

Yearly meetings with NGED Projects.

Catch up meetings with NGESO throughout the year.

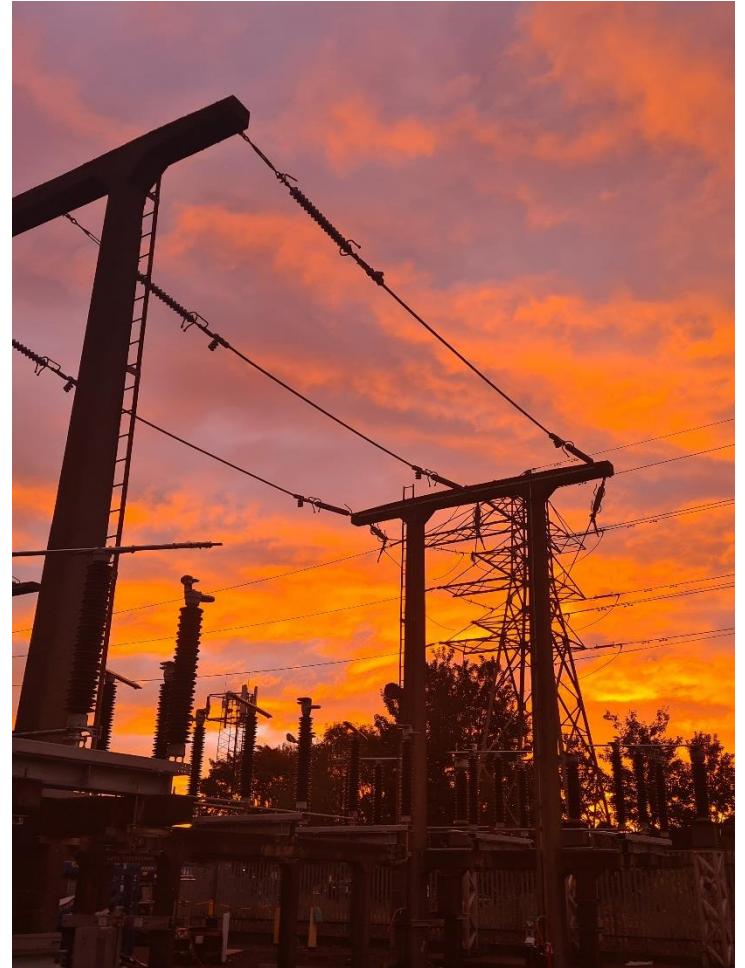
New Outage Planning Process

Outage Planning & Other Departments

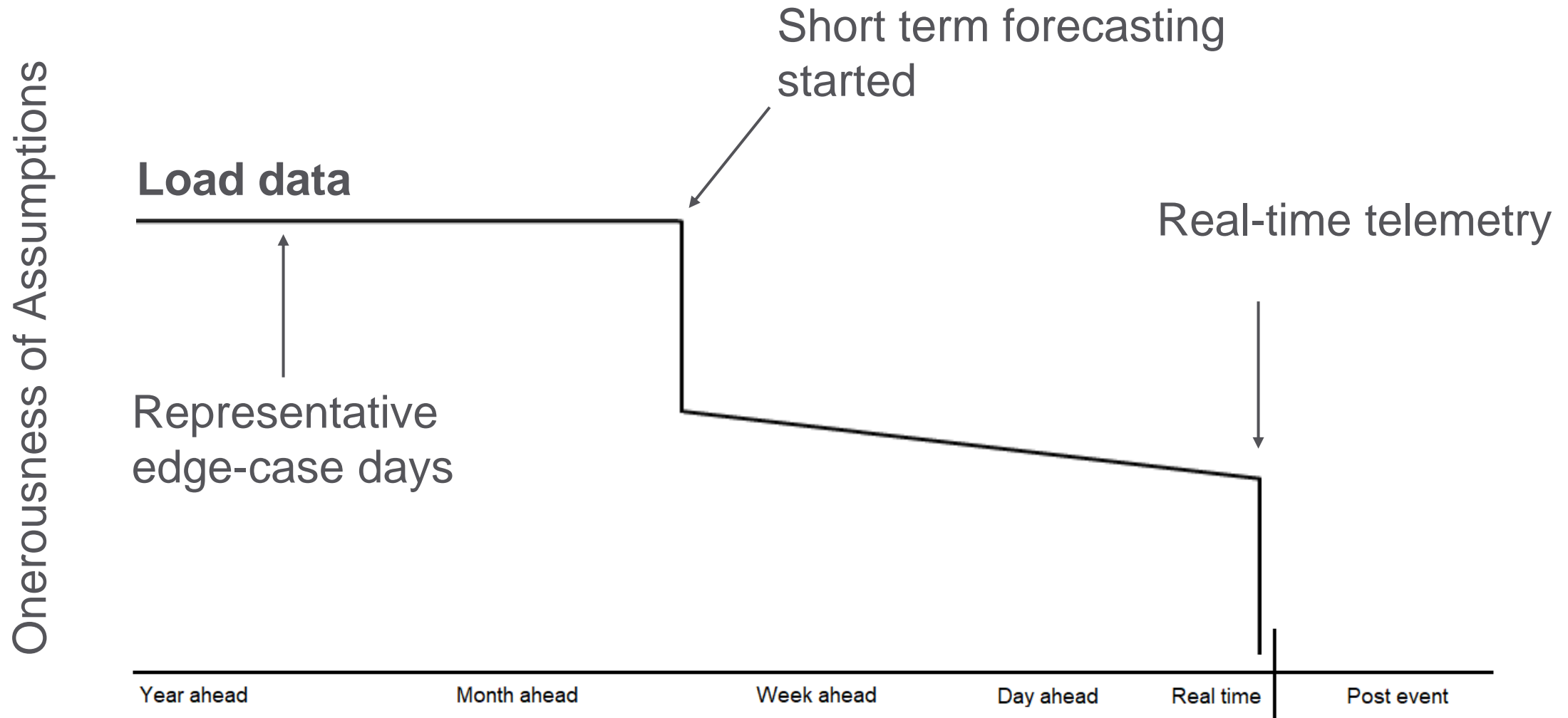
- Monthly meetings with other NGED departments as part of new Integrated Projects Team (IPT) alongside Projects, Primary Network Design, Engineering Design, Consents & Wayleaves.
- Each outage planner part of a different IPT (area specific) to enable better visibility of upcoming works in each area.
- Should enable earlier visibility of longer / more complex outages which will allow us to study earlier / give more time to engage with DSO department if required.
- Will also make combining outages an easier process, therefore reduce amount of DER curtailment / interruptions.

New Role in Control Team to facilitate better engagement between Control Room & Other Departments;

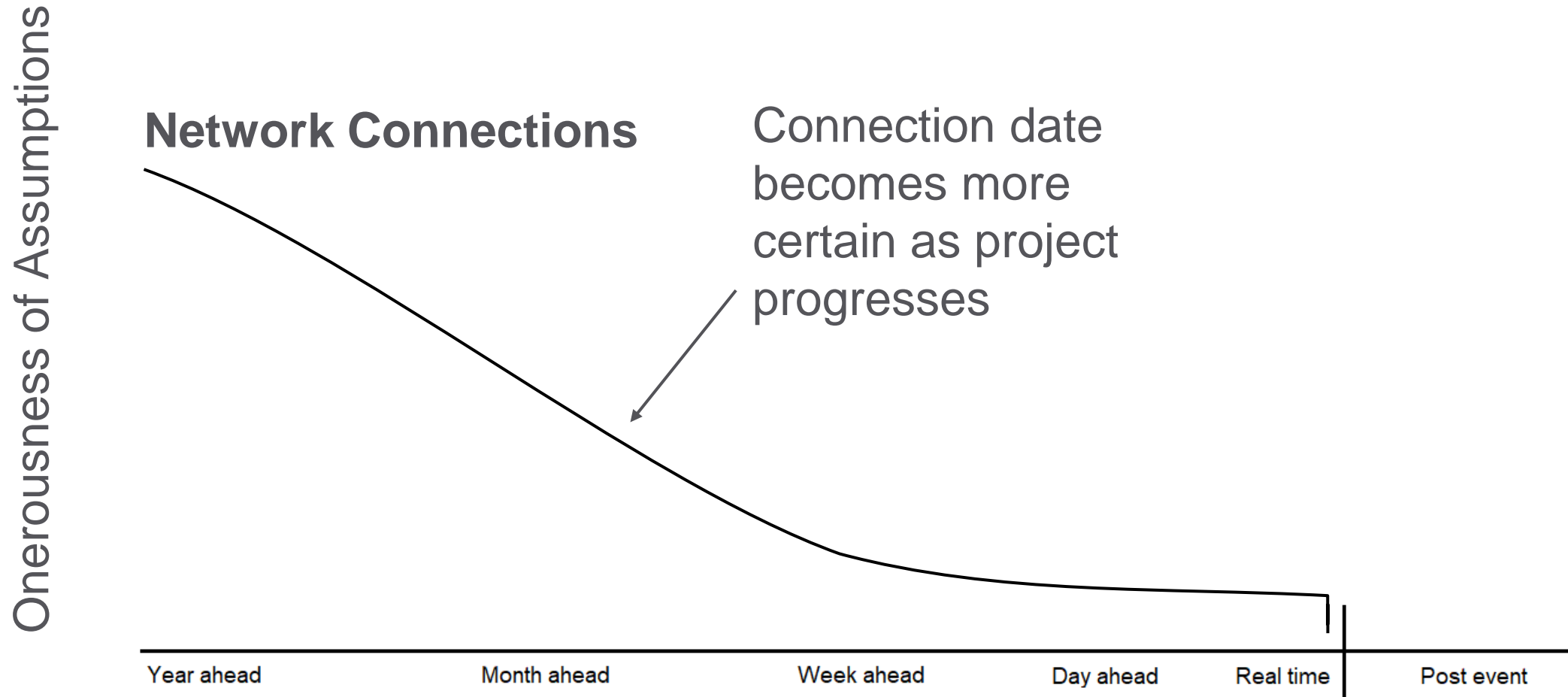
- Tom West – Engagement & Resilience Engineer (South West & Wales)
- Sam Gray – Engagement & Resilience Engineer (East & West Midlands)



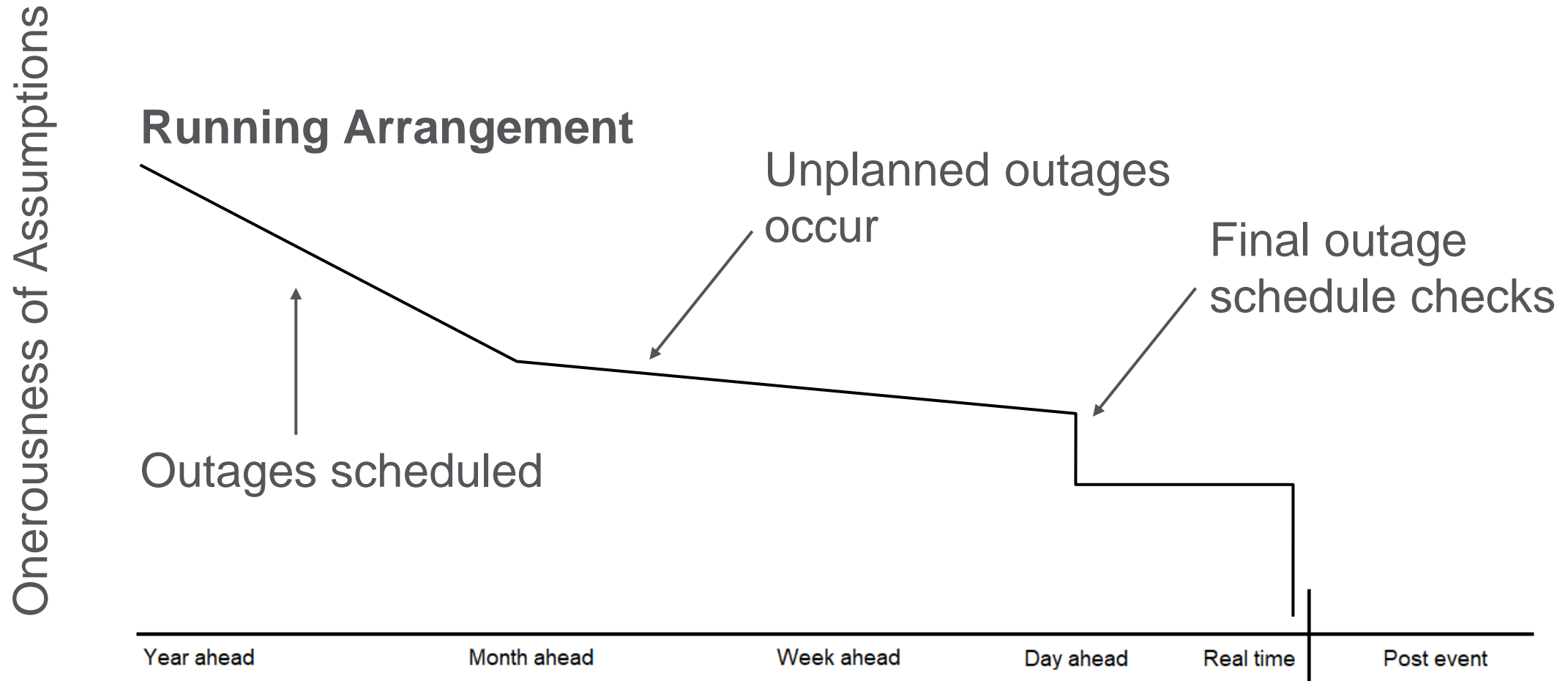
Modelling Inputs



Modelling Inputs



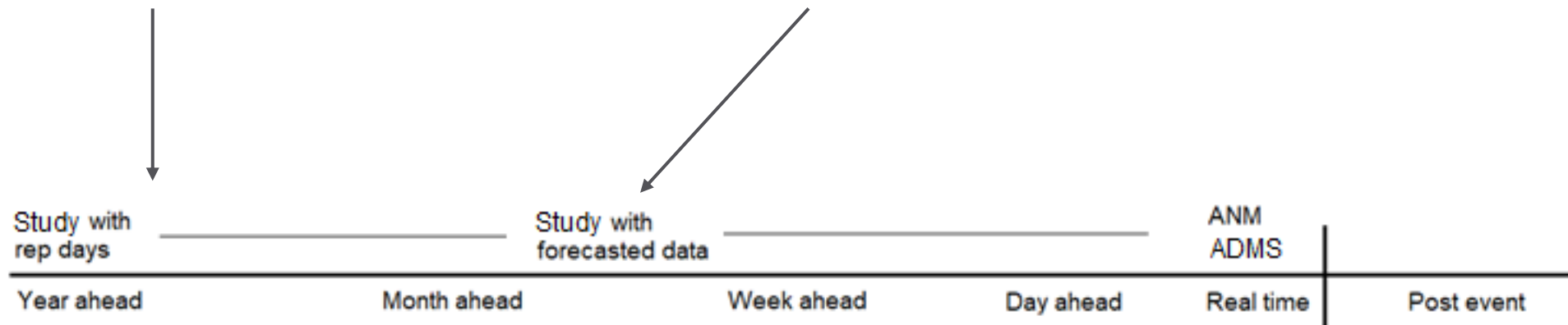
Modelling Inputs



Modelling Timescale

Limited scope for improvement beyond Connection Agreement

Greater opportunity to identify less onerous conditions
(forecasting capability still in development)



Upcoming Forums

Wednesday 18 September, 14.00-15.00

Online check in – [book here](#)

Thursday 21 November, 14.00-17.00

In person, Osborne Clarke's office in Bristol – [book here](#)

Contacts

Regen contacts:

Hannah Stanley, hstanley@regen.co.uk

Emma Madray, emadray@regen.co.uk

NGED contacts:

Southwest & Wales

nged.swestwalesgen@nationalgrid.co.uk

East Midlands

nged.eastmidgen@nationalgrid.co.uk

West Midlands

nged.westmidgen@nationalgrid.co.uk

Any outage specific queries should go to the person responsible for undertaking the works. Their email address will be attached to the outage notification / available to view on the DG Portal under Planned Outage

Electricity
Distribution

Distributed Generator Owner / Operator Forum

Thank you for joining us